



TITAN FLOW CONTROL, INC.

SIMPLEX BASKET STRAINER ♦ THREADED ENDS (FF)

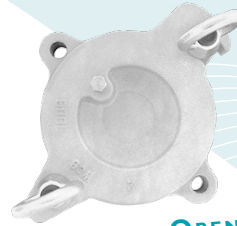
ASME CLASS 150 ♦ ALUMINUM BRONZE - LEAD FREE*

Meets LEAD-FREE⁽¹⁾ requirements!

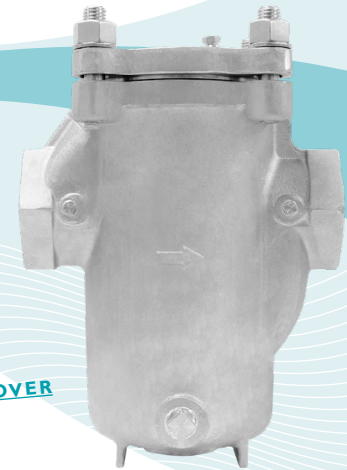
MODELS: BS 87-AB
(ALUMINUM BRONZE)

FEATURES

SIZES: 3/4" ~ 3"



**QUICK-OPEN COVER
AVAILABLE**



- ◇ **BETTER FLOW CHARACTERISTICS**
WITH ITS DUAL ANNULUS DESIGN, THE BS87 SERIES PROVIDES A STRAIGHTER FLOW PATH. DURING FLOW SIMULATION TESTING, THE BS87 ACHIEVED A 10 PERCENT REDUCTION IN PRESSURE LOSS WHEN COMPARED TO "OVER-THE-TOP" STYLE BASKET STRAINERS.
- ◇ **FINER FILTRATIONS**
THE BS87 SERIES IS DESIGNED WITH A MACHINED, FLAT SEAT FOR THE STRAINING ELEMENT. THIS ALLOWS AN OPTIONAL O-RING TO BE INSTALLED UNDERNEATH THE LIP OF THE STRAINING ELEMENT, CREATING A TIGHT SEAL. THIS FEATURE PREVENTS DEBRIS FROM SLIPPING PAST THE STRAINING ELEMENT LIP- AS IS OFTEN THE CASE WITH 'SLANT-TYPE' BASKET STRAINERS THAT CANNOT UTILIZE AN O-RING.
- ◇ **LARGE STRAINING CAPACITY**
WITH ITS LARGE BODY AND SIZEABLE STRAINING ELEMENT, THE BS87 AB HAS THE ABILITY TO STORE LARGE QUANTITIES OF DEBRIS WITHOUT AFFECTING PRESSURE LOSS - THUS MAXIMIZING TIME BETWEEN SERVICING.
- ◇ **NUMEROUS STRAINING ELEMENT OPTIONS**
STRAINING ELEMENTS ARE AVAILABLE IN A VARIETY OF PERFORATIONS, MESHES, AND MATERIALS. SPECIAL DESIGNS ARE ALSO AVAILABLE INCLUDING MAGNETIC, WEDGEWIRE, DRILLED PERFORATIONS, AND PLEATED STRAINING ELEMENTS.
- ◇ **ASTM B148 BODY MATERIAL**
ALUMINUM BRONZE IS STRONGER AND LESS LIKELY TO CORRODE THAN OTHER BRONZE ALLOYS, MAKING IT A PREFERRED CHOICE FOR SEA WATER AND OTHER APPLICATIONS WHERE CORROSION IS A CONCERN. BECAUSE OF ITS COPPER CONTENT, MARINE ORGANISMS CANNOT COLONIZE ON THE MATERIAL. ADDITIONALLY, TITAN'S BS87-AB IS USED FOR POTABLE WATER APPLICATIONS AS IT MEETS LEAD FREE STATUTES REQUIRING THAT THE LEAD CONTENT IN THE WETTED SURFACES IS 0.25% OR LESS AS DETERMINED BY A WEIGHTED AVERAGE.

TECHNICAL

PRESSURE/TEMPERATURE RATING⁽²⁾
AB - ASTM B148 - CLASS 150

WOG (Non-shock): 225 PSI @ 150 °F

1. The BS 87-AB meets requirements for lead free use in potable water systems. The lead content in the wetted surfaces is 0.25% or less as determined by a weighted average. For more information on lead free requirements, contact Titan Flow Control.
2. The above listed temperatures are theoretical and may vary during actual operating conditions. These ratings are based on ASME B16.24 for ASTM B62. The body material of the BS 87 is Aluminum Bronze B148 which may slightly exceed these ratings.

APPLICATIONS

MARKETS: POTABLE WATER, WATER & WASTEWATER, PULP & PAPER, CHEMICAL & PETROCHEMICAL, PETROLEUM, OIL & GAS, TRANSPORTATION, GOVERNMENT, MARINE INDUSTRY(SEAWATER), AND FOOD INDUSTRY

GENERAL APPLICATION: SIMPLEX BASKET STRAINERS ARE INSTALLED INTO A PIPELINE SYSTEM TO REMOVE UNWANTED DEBRIS FROM THE PIPELINE FLOW. BASKET STRAINERS ARE COMMONLY USED IN HORIZONTAL PIPELINES WHERE DEBRIS LOADING IS HIGH AND THE COLLECTION OF SOLIDS IS REQUIRED. STRAINING IS ACCOMPLISHED VIA A PERFORATED OR MESH LINED STRAINING ELEMENT, INTERNAL TO THE BASKET STRAINER. IN GENERAL, THE SIZE OF THE PERFORATION OR MESH SHOULD BE SLIGHTLY SMALLER THAN THE SMALLEST DEBRIS PARTICLE TO BE REMOVED. IT IS IMPORTANT TO NOTE THAT THE CORRECT SIZE OF A BASKET STRAINER IS DETERMINED BY ITS JOB FUNCTION, NOT BY THE SIZE OF THE PIPELINE.

The above data represents common market and service applications. No representation or guarantee, expressed or implied, is given due to the numerous variations of concentrations, temperatures and flow conditions that may occur during actual service.

TITAN® FLOW CONTROL, INC.
YOUR PIPELINE TO THE FUTURE!

Tel: 910-735-0000 ♦ Fax: 910-738-3848 ♦ titan@titanfci.com ♦ www.titanfci.com
290 Corporate Drive ♦ PO Box 7408 ♦ Lumberton, NC 28358



TITAN® FLOW CONTROL, Inc.
 290 Corporate Drive
 Lumberton, NC 28358
 Tel: 910.735.0000

E-mail: titan@titanfci.com
 Web: www.titanfci.com
 Fax: 910.738.3848

SIMPLEX BASKET STRAINER

BS 87-AB - (Aluminum Bronze)

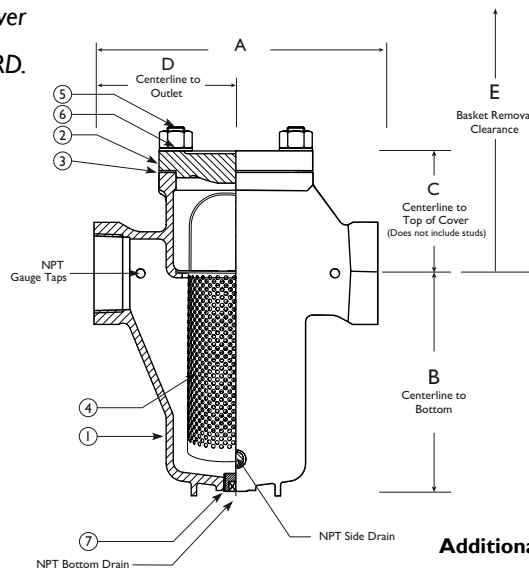
Threaded Ends • Aluminum Bronze

**ASME
 Class 150**

BILL OF MATERIALS (1)

No.	PART	BS87-AB	
1	Body	Aluminum Bronze ASTM B148	
2	Cover	Aluminum Bronze ASTM B148	
3	Gasket (3)(4) O-Ring (3)(4)	Bolted Cover Quick-Open	PTFE (Non-Asbestos) Buna O-Ring
4	Straining(2) Element		Type 304 Stainless Steel
5	Stud		Alloy Steel A193-B8
6	Nut Eye-Nut	Bolted Cover Quick-Open	A194-8 CS A105
7	Drain Plug(5)		Stainless Steel

**Bolted Cover
 is
 STANDARD.**



Drawings are for illustrative purposes. When required please request certified drawings.

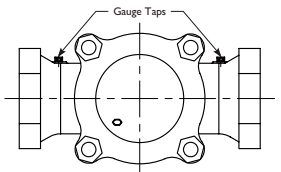
- Equivalent or better materials may be substituted at the manufacturer's discretion.
- Denotes recommended spare parts.
- Carbon Fiber Compressed gasket may be substituted at the manufacturer's discretion.
- Bolted Cover is standard. Quick-Open Cover is optional.
- Standard Vent shall be Brass and Gauge Plugs shall be Stainless Steel.

DIMENSIONS AND PERFORMANCE DATA (1)

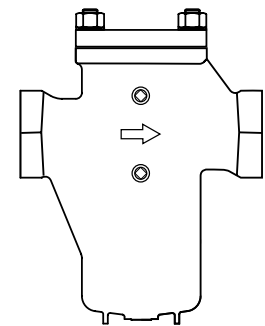
Size	in	3/4	1	1 1/2	2	2 1/2	3
	mm	20	25	40	50	65	80
A DIMENSION FACE TO FACE	in	5.4	5.4	8.75	8.75	12.5	12.5
	mm	136.5	136.5	222.3	222.3	317.5	317.5
B DIMENSION CTR. LINE TO BOTTOM	in	4.88	4.88	6.93	6.93	9.81	9.81
	mm	124	124	176	176	249	249
C DIMENSION CTR. LINE TO TOP	in	3.94	3.94	5.00	5.00	6.50	6.50
	mm	100	100	128	128	164	164
D DIMENSION CTR. LINE TO OUTLET	in	2.68	2.68	4.38	4.38	6.25	6.25
	mm	68.26	68.26	111	111	158.7	158.7
E DIMENSION SCREEN REMOVAL	in	7.75	7.75	11.50	11.50	16.75	16.75
	mm	197	197	293	293	426	426
ASSEMBLED WEIGHT APPROXIMATE	lb	15	15.5	37	36	68	66
	kg	6.8	7.0	16.8	16.3	30.8	30
Flow Coefficient	C _v	24	24	50	78	140	210

- Dimensions, weights, and flow coefficients are provided for reference only. When required, always request certified drawings.
- Face to face values have a tolerance of ±0.06 in (±2.0 mm)

Additional Design Notes:

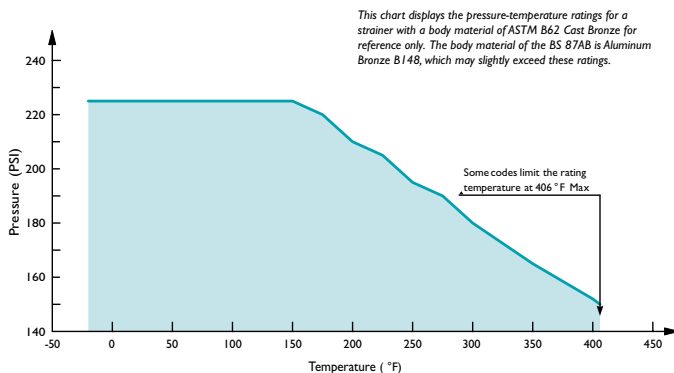


Side drains and gauge taps are standard on sizes 1 1/2" ~ 3"



Gauge Taps located as shown on units 3/4" ~ 1" units

PRESSURE - TEMPERATURE RATING



NPT FITTING SCHEDULE (1)

SIZE	Gauge Taps	Bottom Drain	Side Drain	Cover Vent
3/4" ~ 1"	1/8"	1/2"	NA	1/8"
1 1/2" ~ 2"	1/8"	1"	1/2"	1/8"
2 1/2" ~ 3"	1/8"	1 1/2"	1/2"	1/8"

- 3/4" ~ 1" size units gauge taps are located on the front of body.

REFERENCED STANDARDS & CODES

CODE	DESCRIPTION
ASME B16.24	Cast Copper Alloy Pipe Flanges, Flanged Fittings & Valves
MSS SP-55	Quality Standard - Visual Inspection

PRESSURE - TEMPERATURE RATING

ASME CLASS 150	AB - B148
WOG (Non-shock)	225 PSI @ 150 °F

SCREEN SELECTION GUIDELINES

Size	Liquid	Open Area	Steam	Open Area
3/4" ~ 3"	1/16 (.0625)	41%	3/64 (.045)	36%

As †Titan product changes occur, there may be short-term differences between actual product specifications and the information contained within our literature. †Titan FCI reserves the right to make design and specification changes to improve our products without prior notification. When required, request certified drawings. †TITAN is a registered trademark of Titan Flow Control Incorporated.