



TITAN FLOW CONTROL, INC.

"Y" (WYE) STRAINER ♦ 300 WOG

DUCTILE IRON ♦ GROOVED ENDS

MODELS: YS 58G-UL-DI

(DUCTILE IRON)



FEATURES

SIZE RANGE : 2" ~ 12"



- ♦ **GROOVED-END DESIGN**
TITAN[†] UNIT YS58G-UL-DI GROOVED END DESIGN CAN BE QUICKLY AND EASILY INSTALLED USING INDUSTRY STANDARD AWWA C606 COUPLINGS
- ♦ **LARGE STRAINING CAPACITY**
WITH ITS LARGE BODY AND SIZABLE STRAINING ELEMENT, THE YS5G-UL-DI PROVIDES EXCELLENT OPEN AREA RATIOS THAT MEET THE REQUIREMENTS OF UL SUBJECT 321
- ♦ **RUGGED CONSTRUCTION**
DURABLE HEAVY WALL CONSTRUCTION OF DUCTILE IRON PROVIDES HIGH STRENGTH AND LONG SERVICE LIFE.
- ♦ **SELF-CLEANING CAPABILITY**
WITH A TAPPED NPT BLOW-OFF CONNECTION, THIS UNIT CAN BE FITTED WITH A BLOW-DOWN VALVE WHICH FACILITATES CLEANING OF THE STRAINING ELEMENT. PLEASE CONTACT FACTORY FOR MORE INFORMATION.
- ♦ **APPLICABLE STANDARDS**
YS58G-UL GROOVED END Y TYPE STRAINERS ARE DESIGNED IN ACCORDANCE WITH AWWA C606 SPECIFICATIONS. YSG-UL IS UL LISTED. COMPLIES WITH NSF/ANSI 61 & 372 STANDARDS. APPROVED AND LISTED AS REQUIRED IN NFPA STANDARDS

TECHNICAL

PRESSURE/TEMPERATURE RATING
SIZES 2" ~ 12"

WOG (Non-shock): 300 PSI @ 100 °F

- NSF/ANSI 61
- NSF/ANSI 372

APPLICATIONS

GENERAL APPLICATION: Y-STRAINERS ARE INSTALLED IN A PIPING SYSTEM TO REMOVE UNWANTED DEBRIS FROM THE PIPELINE, PROTECTING EXPENSIVE EQUIPMENT DOWNSTREAM SUCH AS PUMPS, METERS, SPRAY NOZZLES, COMPRESSORS, AND TURBINES. THEY CAN BE PLACED IN A HORIZONTAL OR VERTICAL PIPELINE AS LONG AS THE SCREEN IS IN A DOWNWARD POSITION.

FIRELINE APPLICATIONS, RISERS, & SPRINKLER SYSTEMS.

SERVICING: THE STRAINING ELEMENT NEEDS REGULAR CLEANING TO PREVENT DEBRIS BUILD UP. IT IS NOT ADVISABLE TO ALLOW THE DIFFERENTIAL PRESSURE TO INCREASE BY 20 PSI. ALTHOUGH CLEANING NORMALLY REQUIRES THE REMOVAL OF THE STRAINING ELEMENT, INSTALLING AND USING A TITAN BLOW-OFF DRAIN VALVE CAN INCREASE THE TIME BETWEEN CLEANINGS.

The above data represents common market and service applications. No representation or guarantee, expressed or implied, is given due to the numerous variations of concentrations, temperatures and flow conditions that may occur during actual service.

TITAN[®] FLOW CONTROL, INC.
YOUR PIPELINE TO THE FUTURE!

Tel: 910-735-0000 ♦ Fax: 910-738-3848 ♦ titan@titanfci.com ♦ www.titanfci.com
290 Corporate Drive ♦ PO Box 7408 ♦ Lumberton, NC 28358



TITAN® FLOW CONTROL, Inc.

290 Corporate Drive E-mail: titan@titanfci.com
 Lumberton, NC 28358 Web: www.titanfci.com
 Tel: 910.735.0000 Fax: 910.738.3848

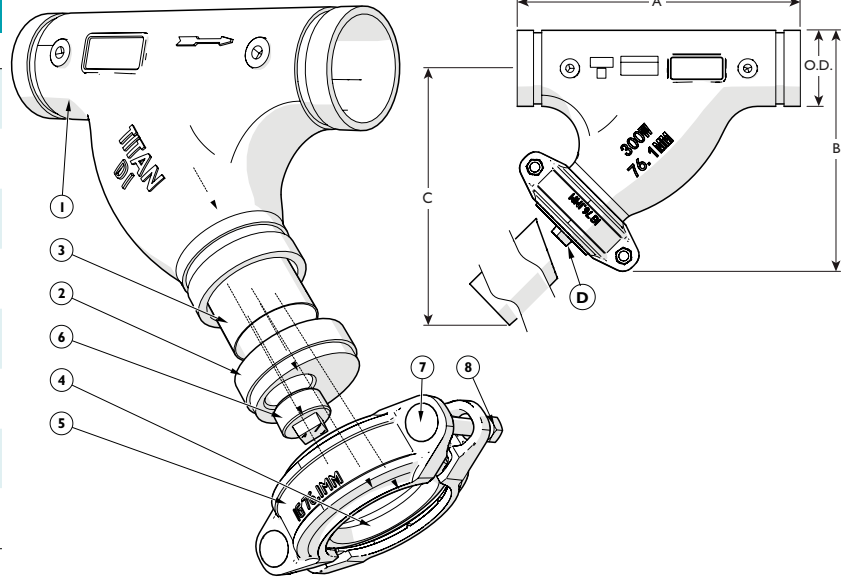
"Y" (WYE) STRAINER
YS 58G-UL-DI (Ductile Iron)

Grooved Ends • Ductile Iron

WOG
300

BILL OF MATERIALS (1)

No.	PART	YS 58G-UL-DI
1	Body	Ductile Iron ASTM A536 65-45-12
2	Cover	Ductile Iron ASTM A536 65-45-12
3	Straining Element (2)	Stainless Steel
4	Gasket (2)	EPDM
5	Rigid Coupling (2)	Ductile Iron ASTM A536 65-45-12
6	NPT Plug (Blow-off)	Malleable Galvanized Iron
7	Track Bolts	Carbon Steel A193-B7
8	Nuts	Carbon Steel A194-2H



1. Bill of Materials represents standard materials. Equivalent or better materials may be substituted at the manufacturer's discretion.
2. Denotes recommended spare parts.

DIMENSIONS AND PERFORMANCE DATA (1)

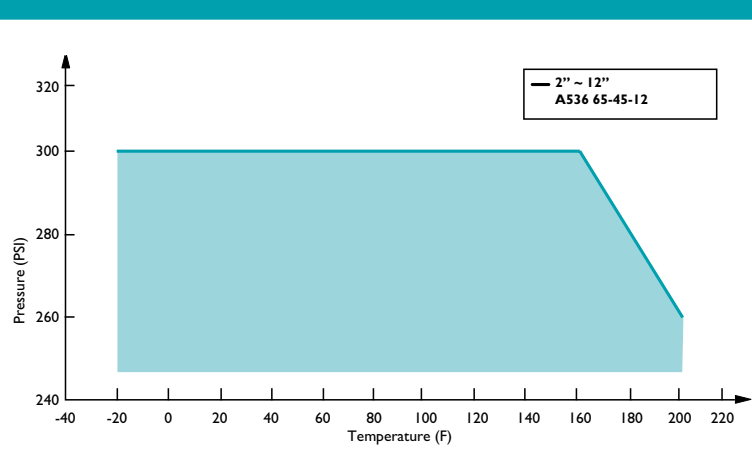
SIZE	DIMENSIONS AND PERFORMANCE DATA (1)									
	in	2	2 1/2	3	4	5	6	8	10	12
O.D. DIMENSION	in	2.38	2.88	3.50	4.50	5.56	6.63	8.63	10.75	12.75
	mm	60.3	73.0	88.9	114.3	141.3	168.4	219.1	273.1	323.9
A DIMENSION FACE TO FACE (FLAT FACE)	in	9.75	10.75	11.75	14.25	16.50	18.5	24.00	27.00	30.00
	mm	248	273	298	362	419	470	610	686	762
B DIMENSION CENTER LINE TO BOTTOM	in	6.69	7.28	8.15	10.00	11.25	13.38	16.54	19.00	22.84
	mm	170	185	207	255	286	340	420	482	580
C DIMENSION SCREEN REMOVAL	in	10.10	10.60	11.60	15.0	16.25	19.50	26.00	32.20	35.70
	mm	257	270	295	381	413	495	660	818	907
D NPT Plug BLOW-OFF	in	1	1	1	1	1 1/2	1 1/2	1 1/2	1 1/2	1 1/2
	mm	25	25	25	40	50	50	50	50	50
APPROXIMATE ASSEMBLED WEIGHT	lb	8.3	13.7	20.2	33.6	48.1	72.2	156.2	239.4	351.6
	kg	3.8	6.2	9.2	15.3	21.8	32.7	70.9	108.6	159.5
Flow Coefficient	C _v	70	75	165	340	500	700	1330	2000	2900

APPROX. LOSS OF HEAD AT 15 FT/ SEC. FLOW VELOCITY

Size	Rate Pressure PSI (kPa)	dP PSI (kPa)
2" 2-1/2	300 (2068)	5.4 (38)
2-1/2	300 (2068)	8.9 (62)
3"	300 (2068)	4.4 (31)
4"	300 (2068)	< 3 (21)
5"	300 (2068)	3.3 (23)
6"	300 (2068)	3.5 (25)
8"	300 (2068)	3.1 (22)
10"	300 (2068)	3.4 (24)
12"	300 (2068)	3.3 (23)

1. Dimensions and weights are for reference only. When required, request certified drawings.
2. Face to face values have a tolerance of ±0.06 in (±2.0 mm) for sizes 10" and lower and a tolerance of ±0.12 in (±3.0 mm) for sizes 12" and larger.

PRESSURE - TEMPERATURE RATINGS (1)



1. This chart displays the pressure-temperature ratings for the YS-58G-UL-DI body.

SCREEN AREAS

Size	Perf. Size	Free Flow area
2" ~ 2-1/2	5/32"	48%
3" ~ 4"	13/64"	53%
5"	15/64"	58%
6" ~ 12"	1/4"	56%

PRESSURE - TEMPERATURE RATING

A395	2" ~ 12"
WOG (Non-shock):	300 PSI @ 100 °F

REFERENCED STANDARDS & CODES

STANDARD	DESCRIPTION
UL Subject 321	Pipeline Strainers
ULC / ORD-C 321	Pipeline Strainers (Canada)
AWWA C606	Grooved and Shouldered Joints
NSF/ANSI 61 AND NSF/ANSI 372	

As Titan product changes occur, there may be short-term differences between actual product specifications and the information contained within our literature. Titan FCI reserves the right to make design and specification changes to improve our products without prior notification. When required, request certified drawings. TITAN is a registered trademark of Titan Flow Control Incorporated.