

TITAN

WYE STRAINER • FLANGED ENDS

CLASS 150 • CARBON AND STAINLESS STEEL



2 1/2" YS 61-SS

Models: **YS 61-CS**
(Carbon Steel)

YS 61-SS
(Stainless Steel)

Size Range: 1/2" thru 24"

WORKING PRESSURES & TEMPERATURE - NON-SHOCK

ANSI 150 lb Class	YS 61-CS	YS 61-SS
WOG (Water, Oil, Gas)	285 PSI @ 100 °F	275 PSI @ 100 °F
Saturated Steam	150 PSI @ 366 °F	150 PSI @ 366 °F
MAX Liquid	80 PSI @ 800 °F	20 PSI @ 1000 °F

Features:

- SELF CLEANING TYPE
- BOLTED COVER FLANGE ALLOWS EASY REMOVAL OF SCREEN FOR CLEANING
ALSO HELPS TO ENSURE PROPER ALIGNMENT OF SCREEN DURING REASSEMBLY
- PRECISION MACHINED SEAT ENSURES PROPER SEATING OF SCREEN
- TAPPED NPT BLOW-OFF
- DRAIN CONNECTION FURNISHED WITH PLUG AS STANDARD
- STRAINER HAS LARGE OPEN AREA
MINIMUM 2.5 TIMES LARGER THAN CORRESPONDING PIPE SIZE
- EPOXY PAINT IS STANDARD ON CARBON STEEL UNITS
- INLET AND OUTLET BOSSES ARE PROVIDED FOR GAUGE TAPPING
- OPTIONAL COVER DESIGNS (I.E. HINGE TYPE)
- BODY MEETS APPLICABLE ASTM STANDARDS
- HIGH TEMPERATURE COVER GASKETS ARE SET IN MACHINED COUNTER BORES
- RAISED FACE WITH BOLT HOLES EITHER SPOT FACED OR BACK FACED

*Ideal Design for Commercial and Industrial Applications
with Higher Pressure and Temperature Requirements*



TITAN FLOW CONTROL

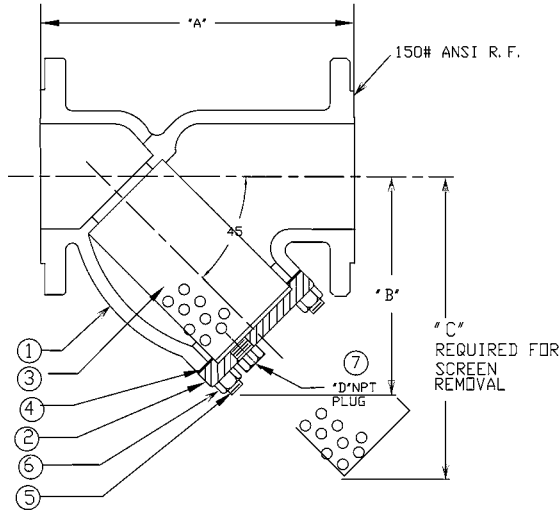
290 Corporate Drive
Lumberton, NC 28358
Tel: 910-735-0000 Fax: 910-735-3848
titan@titanfci.com www.titanfci.com

WYE STRAINER

MODEL: YS 61-CS
FLANGED ENDS
CARBON STEEL

MODEL: YS 61-SS
FLANGED ENDS
STAINLESS STEEL

ANSI Class 150 lb



BILL OF MATERIALS

No.	PART	YS 61-CS	YS 61-SS
1	Body	ASTM A216 Gr. WCB	ASTM A351 Gr. CF8M
2	Cover	ASTM A216 Gr. WCB	ASTM A351 Gr. CF8M
3	Screen	Type 304 Stainless Steel	
4	Gasket	Type 304 Stainless Steel Spiral Wound Non-Asbestos	
5	Studs	ASTM A193 Gr. B7	ASTM A193 Gr. B8 AISI 304
6	Nuts	ASTM A194 Gr. 2H	ASTM A194 Gr. 8 AISI 304
7	Plug	ASTM A105	ASTM A182 Gr. F316

*Recommended spare parts

Notes:

- Face to face values (A Dimension) have a tolerance of ±0.06 in (±2.0 mm) for sizes 10" and lower and a tolerance of ±0.12 in (±3.0 mm) for sizes 12" and larger.
- A wide range of optional gasket materials available - C/F
- Optional body materials available:
(LCB, WC6, WC9, 316L, Alloy 20, and Monel).
- Flange Finish: 125-250 AARH

DIMENSIONS:

SIZE	in	1/2	3/4	1	1 1/4	1 1/2	2	2 1/2	3	4	5	6	8	10	12	14	16	18	20	24
	mm	15	20	25	32	40	50	65	80	100	125	150	200	250	300	350	400	450	500	600
A DIMENSION FACE TO FACE	in	6.50	7.37	7.37	7.00	7.12	7.87	9.75	10.06	12.12	15.62	18.50	21.37	26.00	29.87	36.00	41.75	46.00	49.50	58.37
	mm	166	188	188	178	181	200	248	256	308	397	470	543	661	759	914	1060	1168	1257	1483
B DIMENSION CTR LINE - BOTTOM	in	3.50	3.75	3.75	4.75	4.75	5.25	6.50	7.00	8.25	11.25	13.50	15.50	18.50	22.25	25.00	26.50	31.00	39.00	45.00
	mm	89	96	96	121	121	134	166	178	210	286	343	394	470	566	625	673	787	991	1143
C DIMENSION SCREEN REMOVAL	in	5.00	5.00	5.00	7.00	7.00	7.00	9.75	10.00	12.00	20.00	20.00	22.75	28.00	30.00	36.50	42.00	45.50	56.00	68.00
	mm	127	127	127	178	178	178	248	254	305	508	508	578	712	762	927	1067	1156	1422	1727
D DIMENSION NPT BLOW-OFF	in	3/8	1/2	1/2	1/2	1/2	1/2	1	1	1 1/2	2	2	2	2	2	2	2	2	2	2
	mm	10	15	15	15	15	15	25	25	40	50	50	50	50	50	50	50	50	50	50
ASSEMBLED WEIGHT	lb	5.5	10.3	10.3	12.0	12.5	21.0	32.0	35.0	55.0	90.0	140.0	220.0	356.0	644.0	C/F	C/F	C/F	C/F	C/F
	kg	2.5	4.6	4.6	5.4	5.7	9.5	14.5	15.9	24.9	40.8	63.5	99.7	161.5	292.1	C/F	C/F	C/F	C/F	C/F
Flow Coefficient	C _v	C/F	C/F	C/F	C/F	42	70	110	160	260	400	570	950	1600	2200	3300	4900	6100	8000	11000

Dimensions and weights are for reference only. When required, request certified drawings.

WORKING PRESSURES & TEMPERATURE - NON-SHOCK

ANSI 150 lb Class	YS 61-CS	YS 61-SS
WOG (Water, Oil, Gas)	285 PSI @ 100 °F	275 PSI @ 100 °F
Saturated Steam	150 PSI @ 366 °F	150 PSI @ 366 °F
Max Liquid	80 PSI @ 800 °F	20 PSI @ 1000 °F

STANDARD SCREEN SELECTIONS

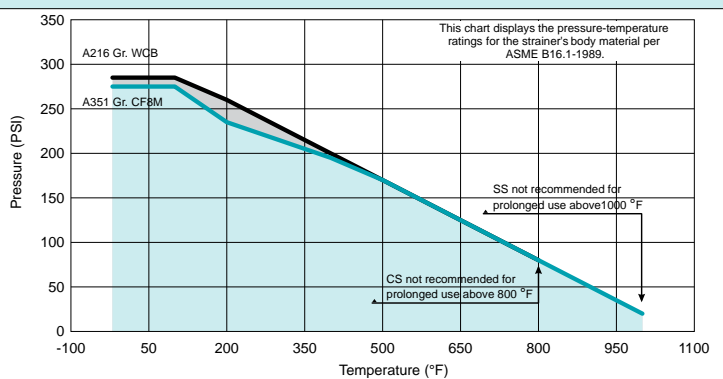
Sizes	Water Service	Open Area	Steam	Open Area
1/2" - 4"	0.062 (1/16)	37%	0.033 (1/32)	28%
5" - 12"	0.125 (1/8)	40%	0.045 (3/64)	36%

A wide range of optional wire mesh and perforated screens are available.

REFERENCED STANDARDS

Design, Shell Wall Thickness, and Pressure-Temperature Rating	ANSI B16.50
---	-------------

PRESSURE-TEMP: A216 Gr. WCB & A351 Gr. CF8M Class 150 LB



TESTING:

Strainers are individually, hydrostatically tested at 1.5 x the 100 °F rating, rounded off to the next higher 25 PSI measurement.

Ordering Code: _____ Size: _____

Customer/Project: _____

Inq./P.O. No.: _____

Titan Order No.: _____

Certified By: _____ Date: _____

Engineering Specification Submittal

Titan FCI makes every effort to ensure the information presented on our literature accurately reflects exact product specifications. However, as changes occur, there may short-term differences between actual product specifications and the data on our literature. Titan FCI reserves the right to make specification changes to improve our products without prior notification.

WYE STRAINER • YS 61-CS • YS 61-SS

Size	Model Number	Description	Drawing No.