

TITAN

SIMPLEX BASKET STRAINER • THREADED & FLANGED ENDS

ANSI CLASS 125 • CAST IRON BODY



Knob Type/Quick Opening Cover
(Quick-open cover is standard)

Models:

BS 25-CI

(Cast Iron 125 lb - Threaded)
(Quick-open cover is standard)

BS 25F-CI

(Cast Iron 125 lb - Flanged)
(Quick-open cover is standard)

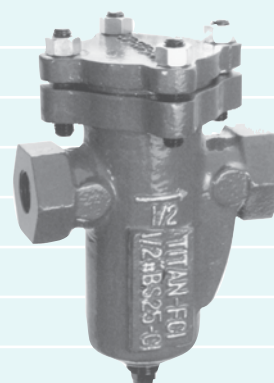
WORKING PRESSURES & TEMPERATURE - NON-SHOCK

ANSI 125 Class	BS 25-CI ⁽¹⁾	BS 25F-CI ⁽¹⁾
WOG (Water, Oil, Gas)	200 PSI @ 100 °F	200 PSI @ 100 °F
Saturated Steam	Not Recommended	Not Recommended
MAX Liquid	Not Recommended	Not Recommended

1. Knob type cover not recommended for steam or high temperature.

Features:

- QUICK-OPEN COVER (KNOB TYPE) AND FULL ANSI RATED BOLTED COVER ARE AVAILABLE
- THREADED SIZES: 3/8" THROUGH 3" - FLANGED SIZES: 1" THROUGH 8"
- LARGE STRAINING CAPACITY WITH A MINIMUM 6 TO 1 RATIO TO CONNECTING PIPE
- USED WHEN DEBRIS LOADING IS HIGH AND THE COLLECTION OF SOLIDS IS REQUIRED
- BOTH THE COVER AND BASKET ARE EQUIPPED WITH O-RINGS TO REDUCE MAINTENANCE COSTS AND INCREASE SERVICE LIFE
- PRECISION MACHINED SEAT ENABLES FINE FILTRATIONS
- GASKET IS ENCAPSULATED IN MACHINED GROOVE
- BOTTOM DRAIN/BLOW-OFF CONNECTION AND SAFETY VENT IN COVER ARE FURNISHED WITH STEEL PLUG - STANDARD
- CAST IRON UNITS ARE EPOXY PAINTED - STANDARD
- CARBON STEEL AND STAINLESS UNITS ARE ALSO AVAILABLE
- BOTH FLANGED AND THREADED END CONNECTIONS ARE AVAILABLE



Full ANSI Rated
Bolted Cover

*Ideal Design for Applications Where Easy Maintenance
and Large Capacity are Required*



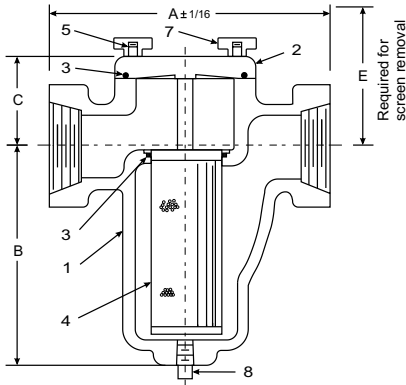
TITAN FLOW CONTROL
LUMBERTON, NC USA

SIMPLEX BASKET STRAINER • CAST IRON

BS 25-CI (THREADED ENDS)

BS 25F-CI (FLANGED ENDS)

ANSI
Class 125



- CAD illustration displays threaded end connection unit only. Table below contains dimensions for both threaded and flanged type units.
- Quick-open type cover is shown. Quick-open cover is standard. Part number 6 (Nuts) only applies to bolted type covers.

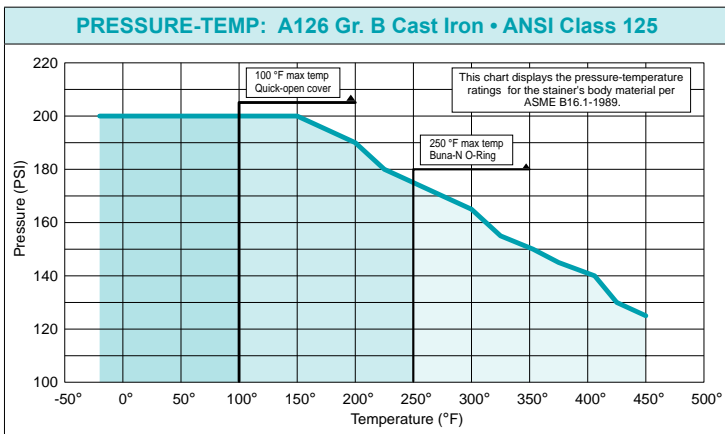
BILL OF MATERIALS		
No.	PART	BS 25-CI & BS 25F-CI
1	BODY	CAST IRON ASTM A126 Gr. B
2	COVER	CAST IRON ASTM A126 Gr. B
3	O-RING/GASKET ⁽¹⁾	BUNA-N
4	BASKET ⁽¹⁾	TYPE 304 STAINLESS STEEL
5	STUDS	A193-B7 ALLOY STEEL
6	NUTS ⁽²⁾	A194-2H CARBON STEEL
7	KNOBS	DUCTILE IRON ASTM A536
8	DRAIN PLUG	CARBON STEEL

1. Denotes recommended spare parts.
2. Part 6 (Nuts) only applies to bolted covers

DIMENSIONS

	in	3/8	1/2	3/4	1	1 1/4	1 1/2	2	2 1/2	3	4	6	8
A₁ DIMENSION FACE TO FACE (THREADED)	in	4.562	4.562	4.562	5.312	6.312	6.312	8.25	9.625	11.25	n/a	n/a	n/a
	mm	116	116	116	135	161	161	210	245	286	n/a	n/a	n/a
A₂ DIMENSION FACE TO FACE (FLANGED)	in	n/a	n/a	n/a	5.687	n/a	7.00	9.00	10.44	11.75	15.00	20.25	27.375
	mm	n/a	n/a	n/a	145	n/a	178	229	267	299	381	515	696
B₁ DIMENSION CTR. LINE TO BOTTOM (THREADED)	in	4.00	4.00	4.00	4.687	6.50	6.50	7.875	8.75	11.375	n/a	n/a	n/a
	mm	102	102	102	120	166	166	201	223	289	n/a	n/a	n/a
B₂ DIMENSION CTR. LINE TO BOTTOM (FLANGED)	in	n/a	n/a	n/a	4.687	n/a	6.50	8.00	8.75	11.50	13.75	20.00	24.24
	mm	n/a	n/a	n/a	120	n/a	166	204	223	293	350	508	616
C₁ DIMENSION CTR. LINE TO TOP (THREADED)	in	2.50	2.50	2.50	2.75	3.00	3.00	3.625	4.00	4.50	n/a	n/a	n/a
	mm	64	64	64	70	77	77	93	102	115	n/a	n/a	n/a
C₂ DIMENSION CTR. LINE TO TOP (FLANGED)	in	n/a	n/a	n/a	3.00	n/a	3.00	3.75	4.00	4.75	6.18	7.88	10.55
	mm	n/a	n/a	n/a	77	n/a	77	96	102	121	157	201	268
D DIMENSION NPT BLOW-OFF (BOTH)	in	3/8	3/8	3/8	3/8	1/2	1/2	3/4	1	1	2	2	2
	mm	10	10	10	10	15	15	20	25	25	50	50	50
E DIMENSION SCREEN REMOVAL (BOTH)	in	4.812	4.812	4.812	5.875	8.125	8.125	10.125	11.875	14.812	19.875	29.125	37.125
	mm	123	123	123	150	207	207	258	302	377	505	740	943
ASSEMBLED WEIGHT (THREADED)	lb	5.5	5.5	C/F	8.0	15.0	14.0	27.0	36.0	55.5	n/a	n/a	n/a
	kg	2.5	2.5	C/F	3.6	6.8	6.4	12.2	16.3	25.2	n/a	n/a	n/a
ASSEMBLED WEIGHT (FLANGED)	lb	n/a	n/a	n/a	11.5	n/a	21.0	34.0	48.5	64.0	118.0	266.0	518.0
	kg	n/a	n/a	n/a	5.2	n/a	9.5	15.4	22.0	29.0	53.5	120.7	235.0
Flow Coefficient	C _v	14	14	14	24	43	43	70	90	140	260	540	950

Dimensions, weights are for reference only. When required, request certified drawing.



Testing: Hydrostatically tested at 1.5 x the 100 °F rating, rounded off to the next higher 25 PSI measurement.

WORKING PRESSURES & TEMPERATURE - NON-SHOCK

ANSI Class 125	BS 25-CI ⁽¹⁾	BS 25F-CI ⁽¹⁾
WOG (Water, Oil, Gas)	200 PSI @ 100 °F	200 PSI @ 100 °F
Saturated Steam	Not Recommended	Not Recommended
Max Liquid	Not Recommended	Not Recommended

1. Knob type cover not recommended for steam or high temperature.

STANDARD SCREEN SELECTIONS

Sizes	Water Service	Open Area	Steam	Open Area
3/8" ~ 2"	1/16 (.062)	41%	1/32 (.033)	28%
2 1/2" ~ 3"	1/16 (.062)	41%	3/64 (.045)	36%
5" ~ 8"	1/8 (.125)	40%	3/64 (.045)	36%

A wide range of wire mesh and perforations are available.

REFERENCED STANDARDS

Cast Iron Pipe Flanges and Flanged Fittings	ANSI B16.1
Cast Iron Threaded Fittings	ANSI B16.4

Ordering Code: _____ Size: _____
 Customer/Project: _____
 Inq./P.O. No.: _____
 Titan Order No.: _____
 Certified By: _____ Date: _____

Engineering Specification Submittal

Titan FCI makes every effort to ensure the information presented on our literature accurately reflects exact product specifications. However, as changes occur, there may short-term differences between actual product specifications and the data on our literature. Titan FCI reserves the right to make specification changes to improve our products without prior notification.

SIMPLEX BASKET STRAINER • MODELS: BS 25/25F-CI

Size	Model Number	Description	Drawing No.