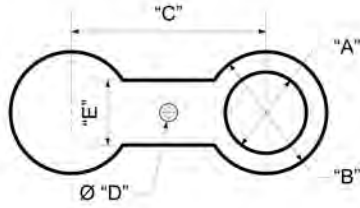




# TITAN FLOW CONTROL, INC.

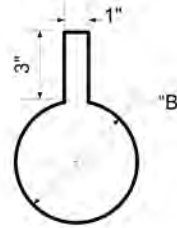
## Spectacle Flanges / Single Blinds

### Spectacle Flange



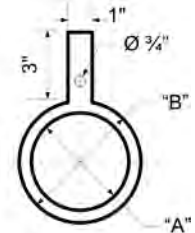
PB 18-SS (Stainless)  
PB 18-CS (Carbon)

### Single Blind



PB 19-SS (Stainless)  
PB 19-CS (Carbon)

### Ring Spacer



PB 20-SS (Stainless)  
PB 20-CS (Carbon)

Pipe Size	150 # Flanges						300 # Flanges					
	A	B	C	D	E	THK	A	B	C	D	E	THK
1/2 "	5/8	1 3/4	2 3/8	5/8	1 1/2	1/8	5/8	2	2 5/8	5/8	1 1/2	3/16
3/4 "	13/16	2 1/8	2 3/4	5/8	1 1/2	1/8	13/16	2 1/2	3 1/4	3/4	1 5/8	3/16
1 "	1 1/8	2 1/2	3 1/8	9/16	1 1/2	1/4	1 1/8	2 3/4	3 1/2	11/16	1 1/2	1/4
1 1/4 "	1 3/8	2 7/8	3 1/2	9/16	1 1/2	1/4	1 3/8	3 1/8	3 7/8	11/16	1 1/2	1/4
1 1/2 "	1 5/8	3 1/4	3 7/8	9/16	1 1/2	1/4	1 5/8	3 5/8	4 1/2	7/8	2	1/4
2 "	2 1/8	4	4 3/4	11/16	2	1/4	2 1/8	4 1/4	5	11/16	2	1/4
2 1/2 "	2 5/8	4 3/4	5 1/2	11/16	2	1/4	2 5/8	5	5 7/8	7/8	2 1/2	1/4
3 "	3 1/8	5 1/4	6	11/16	2 1/2	1/4	3 1/8	5 3/4	6 5/8	7/8	2 1/2	3/8
3 1/2 "	3 5/8	6 1/4	7	11/16	2 1/2	1/4	3 5/8	6 3/8	7 1/4	7/8	2 1/2	3/8
4 "	4 1/4	6 3/4	7 1/2	11/16	2 1/2	3/8	4 1/4	7	7 7/8	7/8	2 1/2	1/2
5 "	5 1/4	7 5/8	8 1/2	7/8	3	3/8	5 1/4	8 3/8	9 1/4	7/8	3	1/2
6 "	6 1/4	8 5/8	9 1/2	7/8	3	1/2	6 1/4	9 3/4	10 5/8	7/8	3	5/8
8 "	8 1/4	10 7/8	11 3/4	7/8	3	1/2	8 1/4	12	13	1	3 1/2	3/4
10 "	10 1/4	13 1/4	14 1/4	1	4	5/8	10 1/4	14 1/8	15 1/4	1 1/8	4	1
12 "	12	16	17	1	4	7/8	12	16 1/2	17 3/4	1 1/4	4	1 1/8
14 "	13 1/4	17 3/8	18 3/4	1 1/4	4 1/4	1	13 1/4	18 3/4	20 1/4	1 1/4	4 3/4	1 1/4
16 "	15 1/4	19 7/8	21 1/4	1 1/4	4 1/4	1	15 1/4	20 7/8	22 1/2	1 1/2	4 7/8	1 7/16
18 "	17 1/4	21 1/4	22 3/4	1 3/8	4 1/2	1	17 1/4	23 1/8	24 3/4	1 1/2	4 1/2	1 5/8
20 "	19 1/4	23 1/2	25	1 3/8	4 3/4	1 1/8	19 1/4	25 3/8	27	1 1/2	4 3/4	1 3/4

All sizes in inches. Larger Sizes Available - Consult Factory

Pipe Size	600 # Flanges					
	A	B	C	D	E	THK
1/2 "	5/8	2	2 5/8	5/8	1 1/2	1/4
3/4 "	13/16	2 1/2	3 1/4	3/4	1 5/8	5/16
1 "	1 1/8	2 3/4	3 1/2	3/4	2 1/4	3/8
1 1/4 "	1 3/8	3 1/8	3 7/8	3/4	2	3/8
1 1/2 "	1 5/8	3 5/8	4 1/2	7/8	2 5/8	3/8
2 "	2 1/8	4 1/4	5	3/4	2 1/4	3/8
2 1/2 "	2 1/2	5	5 7/8	7/8	2 5/8	1/2
3 "	3 1/8	5 3/4	6 5/8	7/8	2 5/8	5/8
3 1/2 "	3 5/8	6 1/4	7 1/4	1	3	5/8
4 "	4 1/8	7 1/2	8 1/2	1	3	5/8
5 "	5 1/8	9 3/8	10 1/2	1 1/8	3 3/8	7/8
6 "	6 1/8	10 3/8	11 1/2	1 1/8	3 3/8	1
8 "	8	12 1/2	13 3/4	1 1/4	3 3/4	1 1/4
10 "	10 1/8	15 3/8	17	1 3/8	4 1/8	1 1/2
12 "	12	17 7/8	19 1/4	1 3/8	4 1/8	1 3/4
14 "	13 1/4	19 1/4	20 3/4	1 1/2	4 1/2	2
16 "	15 1/4	22 1/8	23 3/4	1 5/8	4 7/8	2 1/4
18 "	17 1/4	24	25 3/4	1 3/4	5 1/4	2 1/2
20 "	19 1/4	26 3/4	28 1/2	1 3/4	5 1/4	2 3/4

### Notes:

- For use with Raised or Flat-Faced Flanges.
- Available with serrated (phonographic style) surface or ground finish. Available with ring-type joint.
- Specify surface dimension in Micro-inch ASA 500, 250, 125, 63, or 32. (If not specified, Mill Finish is supplied by default)
- Normally supplied in A285 Gr. C, A515 Gr. 70, A516 Gr. 70, 304SS, 316SS. Other materials available. Call for details.
- This brochure is general in nature and the manufacturer reserves the right to alter materials or to make design improvements. Please request certified prints for exact dimensions when required.