

TITAN

WYE STRAINER • FLANGED END, FLAT FACE CLASS 150 • ASTM B62 CAST BRONZE



4" YS 54-BZ

Model: YS 54-BZ

**Cast Bronze • ANSI Class 150
Size Range: 2" thru 12"**

WORKING PRESSURES & TEMPERATURE - NON-SHOCK

ANSI 150 lb Class	Model: YS 54-BZ
WOG (Water, Oil, Gas)	225 PSI @ 150 °F
Saturated Steam	150 PSI @ 366 °F
MAX Liquid	135 PSI @ 406 °F

Features:

- SELF CLEANING TYPE
- BOLTED COVER FLANGE ALLOWS EASY REMOVAL OF SCREEN FOR CLEANING
ALSO HELPS TO ENSURE PROPER ALIGNMENT OF SCREEN DURING REASSEMBLY
- PRECISION MACHINED SEAT ENSURES PROPER SEATING OF SCREEN
- TAPPED NPT BLOW-OFF
- DRAIN CONNECTION FURNISHED WITH PLUG AS STANDARD
- STRAINER HAS LARGE OPEN AREA
MINIMUM 2.5 TIMES LARGER THAN CORRESPONDING PIPE SIZE
- BODY MEETS APPLICABLE ASTM STANDARDS
- HIGH TEMPERATURE COVER GASKETS ARE SET IN MACHINED COUNTER BORES
- ALL FLANGES FACED AND DRILLED IN ACCORDANCE WITH ANSI B16.24
- FLAT FACED WITH BOLT HOLES EITHER SPOT FACED OR BACK FACED
- SIZE RANGES FROM 2" THROUGH 12" - LARGER SIZES AVAILABLE - CONSULT FACTORY

IDEAL DESIGN FOR MARINE AND COMMERCIAL APPLICATIONS

290 Corporate Drive
PO Box 7408
Lumberton, NC 28358

Titan Flow Control, Inc.
www.titanfci.com

Tel: 910-735-0000
Fax: 910-738-3848
titan@titanfci.com



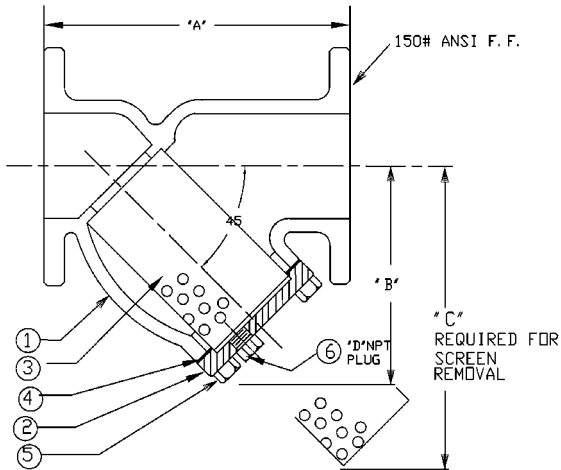
TITAN FLOW CONTROL

290 Corporate Drive
Lumberton, NC 28358
Tel: 910-735-0000 Fax: 910-735-3848
titan@titanfci.com www.titanfci.com

WYE STRAINER

MODEL: **YS 54-BZ**
FLAT FACED - FLANGED ENDS
CAST BRONZE ASTM B62

ANSI Class 150 lb



BILL OF MATERIALS

No.	PART	MATERIAL
1	BODY	ASTM B62 CAST BRONZE (85-5-5-5)
2	COVER	ASTM B62 CAST BRONZE (85-5-5-5)
3	SCREEN*	TYPE 304 STAINLESS STEEL
4	GASKET*	TEFLON
5	CAP SCREW	BRONZE - ASTM B62
6	PLUG	BRONZE - ASTM B62

*Recommended spare parts

Notes:

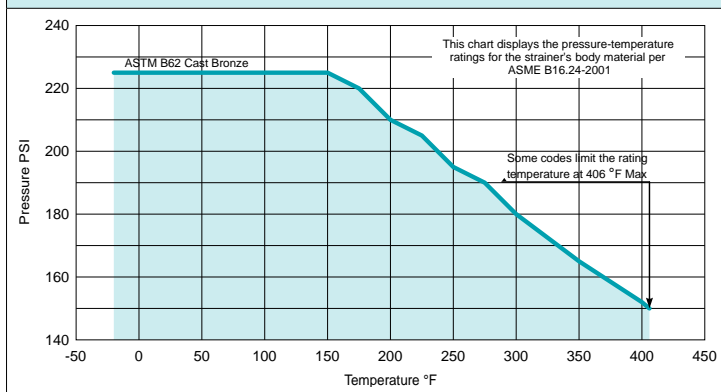
- Face to face values (A Dimension) have a tolerance of ± 0.06 in (± 2.0 mm) for sizes 10" and lower and a tolerance of ± 0.12 in (± 3.0 mm) for sizes 12" and larger.
- Gauge taps are standard on sizes 2 ~ 8", with NPT blow-offs of 0.5 in (15 mm).
- Bronze is manufactured from 85-5-5-5 Bronze ASTM - B62
- Flanges manufactured in accordance with ASME B16.24

DIMENSIONS:

SIZE	in	2	2 1/2	3	4	5	6	8	10	12
	mm	50	65	80	100	125	150	200	250	300
A DIMENSION FACE TO FACE	in	7.75	9.75	10.06	12.12	C/F	18.30	21.37	C/F	C/F
	mm	197	248	256	308	C/F	465	543	C/F	C/F
B DIMENSION CTR. LINE TO BOTTOM	in	5.25	6.50	7.00	8.25	C/F	13.50	15.50	C/F	C/F
	mm	133	165	178	210	C/F	343	394	C/F	C/F
C DIMENSION SCREEN REMOVAL	in	7.00	9.75	10.00	12.00	C/F	20.00	22.75	C/F	C/F
	mm	178	248	254	305	C/F	508	578	C/F	C/F
D DIMENSION NPT BLOW-OFF	in	1/2	1	1	1 1/2	C/F	2	2	C/F	C/F
	mm	15	25	25	40	C/F	50	50	C/F	C/F
ASSEMBLED WEIGHT	lb	22.0	34.0	38.0	64.0	C/F	132.0	240.0	C/F	C/F
	kg	10.0	15.4	17.2	29.0	C/F	59.9	108.9	C/F	C/F
Flow Coefficient	C_v	70	110	160	260	C/F	570	950	C/F	C/F

*Dimensions and weights are for reference only. When required, request certified drawings.

PRESSURE-TEMP: ASTM B62 CAST BRONZE ANSI CLASS 150 LB



TESTING: Strainers are individually, hydrostatically tested at 1.5 x the 100°F rating, rounded off to the next higher 25 PSI measurement.

WORKING PRESSURES & TEMPERATURE - NON-SHOCK

ANSI CLASS	WOG (Water, Oil, Gas)	225 PSI @ 150 °F
150 lb	Saturated Steam	150 PSI @ 366 °F
YS 54-BZ	Max Liquid	135 PSI @ 406 °F

STANDARD SCREEN SELECTIONS

Sizes	Water Service	Open Area	Steam	Open Area
2" - 4"	1/16 (.062)	41 %	1/32 (.033)	28 %
5" - 12"	1/8 (.125)	40 %	3/64 (.045)	36 %

A wide range of optional wire mesh and perforated screens are available.

REFERENCED STANDARDS

Shell Wall Thickness	ANSI B16.24
Pressure vs. Temp. Rating	ANSI B16.24
End Flanges	ANSI B16.24

Ordering Code: _____ Size: _____
 Customer/Project: _____
 Inq./P.O. No.: _____
 Titan Order No.: _____
 Certified By: _____ Date: _____

Engineering Specification Submittal

Titan FCI makes every effort to ensure the information presented on our literature accurately reflects exact product specifications. However, as changes occur, there may short-term differences between actual product specifications and the data on our literature. Titan FCI reserves the right to make specification changes to improve our products without prior notification.

WYE STRAINER - CAST BRONZE - FLANGED ENDS • YS 54-BZ

Size	Model Number	Description	Drawing No.