

**TITAN**

## WYE STRAINER • RAISED FACE, FLANGED ENDS

Class 600 lb • Carbon Steel and Stainless Steel



3" YS 64-SS

Models: YS 64-CS  
(Carbon Steel)

YS 64-SS  
(Stainless Steel)

**Size Range: 1/2" ~ 12"**

### WORKING PRESSURES & TEMPERATURE - NON-SHOCK

ANSI 600 lb Class	YS 64-CS	YS 64-SS
WOG (Water, Oil, Gas)	1480 PSI @ 100 °F	1440 PSI @ 100 °F
Saturated Steam	600 PSI @ 489 °F	600 PSI @ 489 °F
MAX Liquid	825 PSI @ 800 °F	700 PSI @ 1000 °F

### Features:

- SELF CLEANING TYPE
- PRECISION MACHINED SCREEN SEAT
- TAPPED NPT BLOW-OFF
- DRAIN/BLOW-OFF CONNECTION FURNISHED WITH PLUG STANDARD
- OPTIONAL COVER DESIGNS (SWING, CLAMP, HINGE TYPE)
- EPOXY PAINTING IS STANDARD ON ALL CARBON STEEL UNITS
- LARGE OPEN AREA - MINIMUM 2.5 TIMES LARGER THAN CORRESPONDING PIPE
- INLET AND OUTLET BOSSES ARE PROVIDED FOR GAUGE TAPPING
- HIGH TEMPERATURE COVER GASKET IS SET IN MACHINED COUNTER BORES
- STAINLESS STEEL STRAINERS DESIGNED WITH STAINLESS STEEL NUTS AND BOLTS
- BOLTED COVER FLANGE ALLOWS EASY REMOVAL OF SCREEN FOR CLEANING
- ALSO HELPS TO ENSURE PROPER ALIGNMENT OF SCREEN DURING REASSEMBLE
- RAISED FACED FLANGES WITH BOLT HOLES EITHER SPOT FACED OR BACK FACED

*Ideal Design for Petrochemical and Industrial Applications  
with Higher Pressure and Temperature Requirements.*



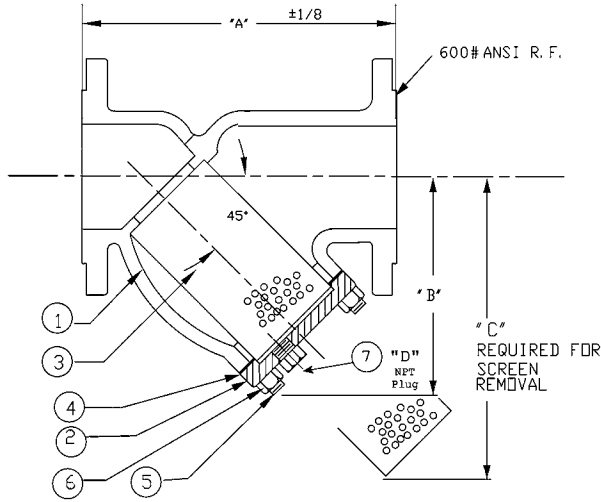
**TITAN FLOW CONTROL**

290 Corporate Drive  
Lumberton, NC 28358  
Tel: 910-735-0000 Fax: 910-735-3848  
titan@titanfci.com www.titanfci.com

**WYE STRAINER**

MODEL: **YS 64-CS** MODEL: **YS 64-SS**  
CARBON STEEL STAINLESS STEEL  
FLANGED - RAISED FACE FLANGED - RAISED FACE

**ANSI Class 600 lb**



**BILL OF MATERIALS**

No.	PART	YS 64-CS	YS 64-SS
1	Body	ASTM A216 Gr. WCB	ASTM A351 Gr. CF8M
2	Cover	ASTM A216 Gr. WCB	ASTM A351 Gr. CF8M
3	Screen*	304 Stainless Steel	
4	Gasket*	304 Stainless Steel Spiral Wound Non-Asbestos	
5	Studs	ASTM A193-B7	ASTM A193 B8 T316SS
6	Nuts	ASTM A194-2H	ASTM A194 Gr. 8 T316SS
7	Plug	ASTM A105	ASTM A182 F316

\*Recommended spare parts

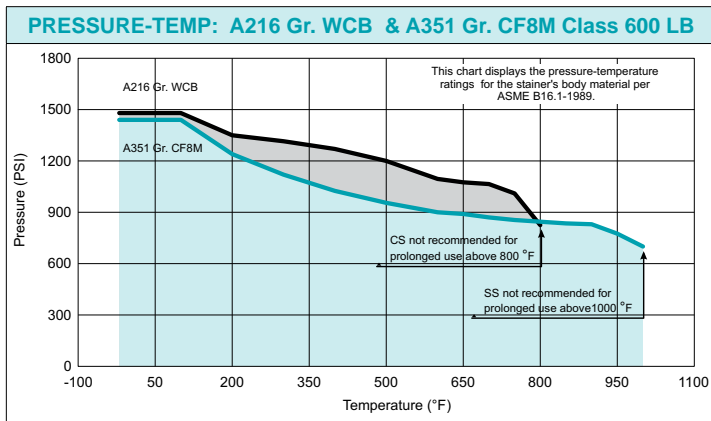
**Notes:**

- A wide range of optional gasket materials available - C/F.
- Optional body materials available: (LCB, WC6, WC9, 316L, Alloy 20, and Monel).
- Flange Finish: 125-250 AARH

**DIMENSIONS:**

SIZE	in	1/2	3/4	1	1 1/4	1 1/2	2	2 1/2	3	3 1/2	4	5	6	8	10	12
	mm	15	20	25	32	40	50	65	80	90	100	125	150	200	250	300
A DIMENSION FACE TO FACE	in	6.62	8.31	8.31	10.12	10.25	11.00	12.00	13.50	14.75	17.93	22.25	25.62	31.75	37.68	45.50
	mm	169	212	212	258	261	280	305	343	375	456	566	651	807	958	1156
B DIMENSION CTR. LINE - BOTTOM	in	3.50	3.75	3.75	5.50	5.50	7.00	8.25	9.25	10.37	12.50	15.00	20.00	24.00	28.50	34.50
	mm	89	96	96	140	140	178	210	235	264	318	381	508	610	724	877
C DIMENSION SCREEN REMOVAL	in	5.00	5.00	5.00	8.00	8.00	10.00	12.50	14.50	14.87	19.50	23.00	31.00	38.50	45.50	52.00
	mm	127	127	127	204	204	254	318	369	378	496	585	788	978	1156	1321
D DIMENSION NPT BLOW-OFF	in	3/8	1/2	1/2	1/2	1/2	1/2	1	1	1 1/4	1 1/2	2	2	2	2	2
	mm	10	15	15	15	15	15	25	25	32	40	50	50	50	50	50
ASSEMBLED WEIGHT	lb	7.5	10.0	13.5	19.0	25.0	32.0	50.0	65.0	125.0	125.0	254.0	304.0	526.0	1090.0	1558.0
	kg	3.4	4.5	6.1	8.6	11.3	14.5	22.7	29.5	56.7	56.7	115.1	137.9	238.6	493.8	705.9
Flow Coefficient	C <sub>v</sub>	---	---	---	---	42	69	110	150	200	260	400	560	950	1600	2010

Dimensions and weights are for reference only. When required, request certified drawing.



**TESTING:** Strainers are individually, hydrostatically tested at 1.5 x the 100 °F rating, rounded off to the next higher 25 PSI measurement.

**WORKING PRESSURES & TEMPERATURE - NON-SHOCK**

ANSI 600 lb Class	YS 64-CS	YS 64-SS
WOG (Water, Oil, Gas)	1480 PSI @ 100 °F	1440 PSI @ 100 °F
Saturated Steam	600 PSI @ 489 °F	600 PSI @ 489 °F
Max Liquid	825 PSI @ 800 °F	700 PSI @ 1000 °F

**STANDARD SCREEN SELECTIONS**

Sizes	Water Service	Open Area	Steam	Open Area
1/2" ~ 4"	0.062 (1/16)	37%	0.033 (1/32)	28%
5" ~ 12"	0.125 (1/8)	40%	0.045 (3/64)	36%

A wide range of optional wire mesh and perforated screens are available.

**APPLICABLE STANDARDS**

End Flanges	ANSI B16.5
Shell Wall Thickness	ANSI B16.34
Pressure vs. Temp. Rating	ANSI B16.34

Ordering Code: \_\_\_\_\_ Size: \_\_\_\_\_  
 Customer/Project: \_\_\_\_\_  
 Inq./P.O. No.: \_\_\_\_\_  
 Titan Order No.: \_\_\_\_\_  
 Certified By: \_\_\_\_\_ Date: \_\_\_\_\_

**Engineering Specification Submittal**

Titan FCI makes every effort to ensure the information presented on our literature accurately reflects exact product specifications. However, as changes occur, there may short-term differences between actual product specifications and the data on our literature. Titan FCI reserves the right to make specification changes to improve our products without prior notification.

**WYE STRAINER • YS 64-CS • YS 64-SS**

Size	Model Number	Description	Drawing No.